

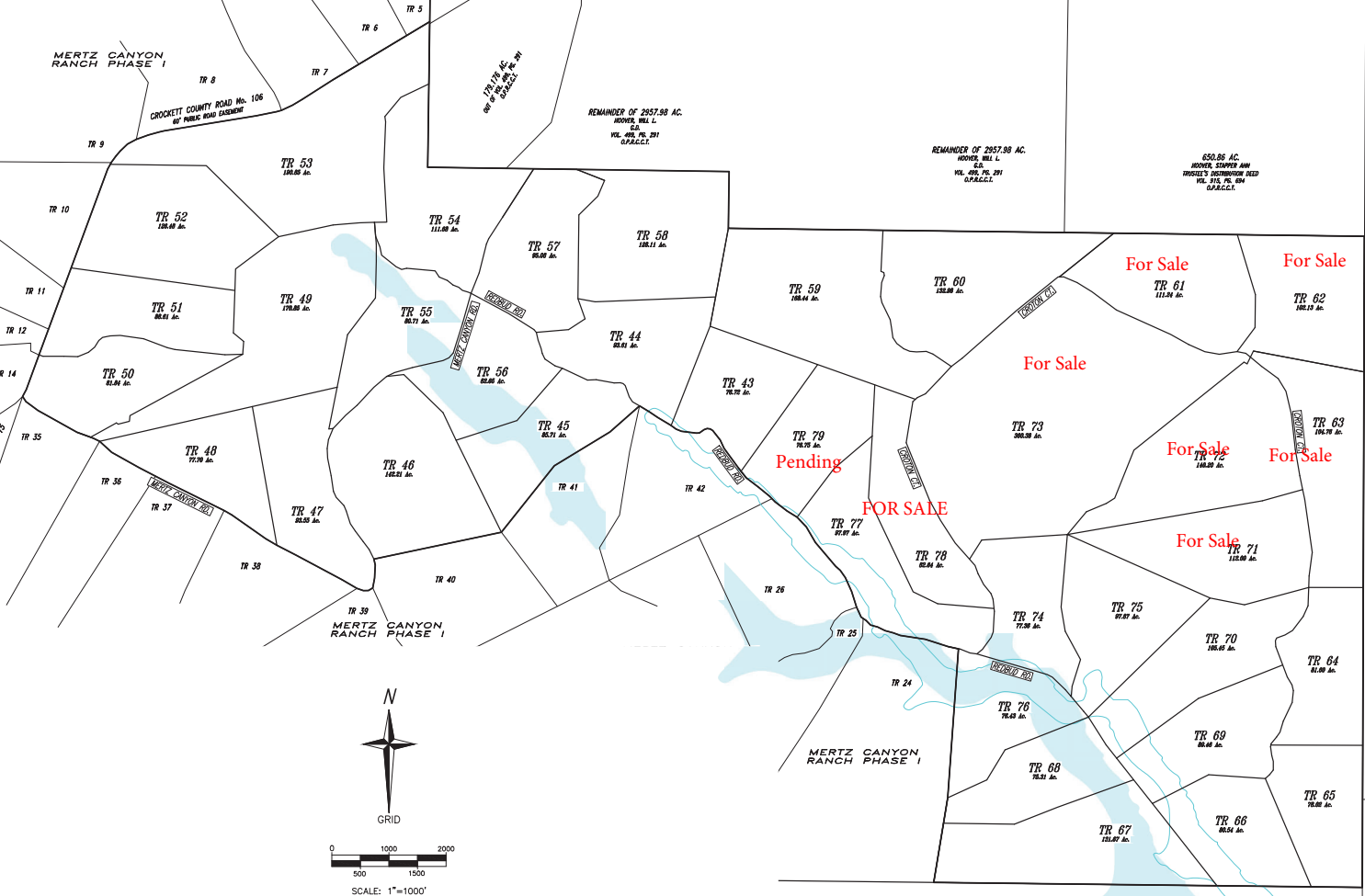
MERTZ CANYON RANCH PHASE I

CROCKETT COUNTY ROAD No. 106
60' PUBLIC ROAD EASEMENT

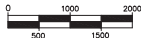
REMAINDER OF 2957.98 AC.
MOORE, WIL L.
S24
VOL. 108, PG. 291
S.P.A.C.C.T.

REMAINDER OF 2957.98 AC.
MOORE, WIL L.
S24
VOL. 108, PG. 291
S.P.A.C.C.T.

650.86 AC.
MOORE, SHARPE AND
HUSSELL'S SUCCESSION TRUST
VOL. 215, PG. 304
S.P.A.C.C.T.



GRID



SCALE: 1"=1000'